

G.H. Rigby & Sons Limited



PIPE SUPPORTS.

SLING ROD CAGE...CARBON STEEL...FOR UNIVERSAL BEAMS.

GENERALLY TO BS 3974 Pt. 2

Materials;

Cage to BS 4360 Gr 43A.

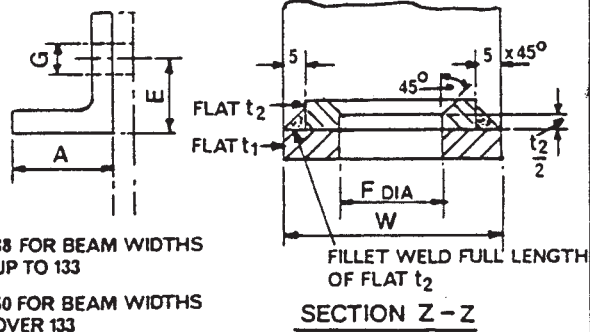
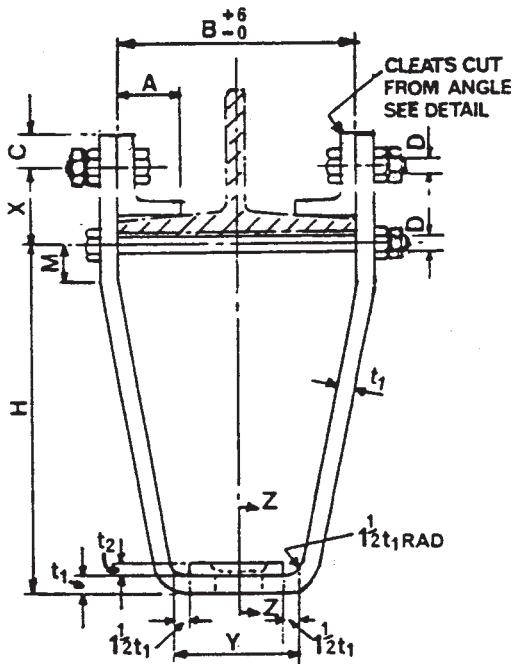
Metric Bolts to BS 4190 Gr 4.6.

Metric Nuts to BS 4190 Gr 4.

To order this standard Quote Beam Cage/Rod Dia./Dim. B.

ALL DIMENSIONS IN MILLIMETRES

B = NOM BEAM FLANGE WIDTH



A = 38 FOR BEAM WIDTHS UP TO 133

A = 50 FOR BEAM WIDTHS OVER 133

* FOR ATTACHMENT TO BEAMS WITH WIDER FLANGES THAN SHOWN, A NON-STANDARD CAGE WITH INCREASED 'H' MUST BE USED TO LIMIT CAGE INCLINATION TO 25° MAX FROM THE VERTICAL.

LOCKNUTS MAY BE NORMAL OR THIN NUTS

TABLE GIVING DIMENSION 'X' FOR BEAM FLANGE WIDTHS

SLING ROD DIA	NOMINAL FLANGE WIDTH B															
	102	127	133	140	146	152	165	171	178	191	210	229	254	292	330	
12		48						52								
16		54						59			62					
20		61						66			69					
24		78						83			87					
30		79						84			88			92		
36		92						97			101			106		
42		105						110			114			119		

SLING ROD DIA	W FOR CLEAT & FLAT	THKNS		SIZE OF ANGLE	C	E	H	M	Y	HOLE DIA F	BOLT DIA D	BOLT HOLE DIA G	MIN. THROUGH-BOLT LENGTH	CLEAT BOLT LENGTH	MAX SUPPORT BEAM FLANGE WIDTH	APPROX WEIGHT kg	SAFE WORK'G LOAD kg
		t1	t2														
12	45	8	8	A x 50 x 8	20	30	170	25	55	18	M12	14	B+50	40	191	3	530
16	45	10	10	A x 65 x 8	30	35	180	30	70	22	M16	18	B+60	50	210	4	1010
20	60	15	10	A x 75 x 8	35	40	200	30	90	30	M20	22	B+75	60	229	7	1580
24	80	15	10	A x 100 x 12	45	55	210	40	95	33	M24	26	B+80	70	254	9	2280
30	90	15	15	A x 100 x 12	45	55	240	50	115	43	M30	33	B+90	80	292	12	3650
36	100	20	20	A x 125 x 12	60	65	275	65	140	48	M36	39	B+110	100	330	19	5340
42	130	25	25	A x 150 x 15	75	75	305	75	165	56	M42	45	B+130	110	330	31	7400