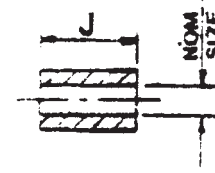
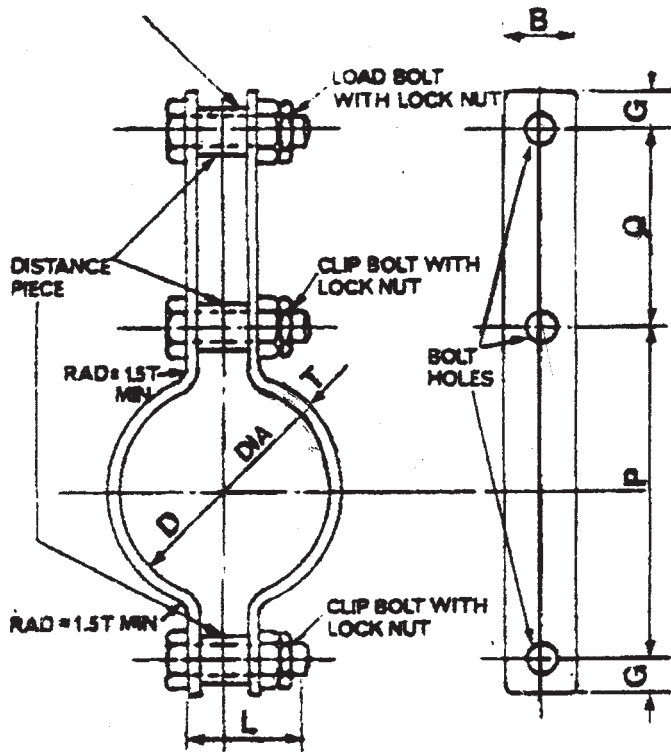


# G.H. Rigby & Sons Limited



THIS DISTANCE PIECE MUST BE FITTED WHEN USING THE WELDLESS EYE NUT SLING ROD



DISTANCE PIECE

LOCK NUTS MAY BE NORMAL OR THIN NUTS

+ MATERIALS+

- Pipe Clips to BS 1502 151 or 161 Gr 28.
- Metric Bolts BS 4190 Gr4.6
- Metric Nuts BS 4190 Gr4.
- Distance Piece BS 1387 Med.

To order this standard Quote Pipe Clip PC3 and Diameter.

ALL DIMENSIONS IN MILLIMETRES UNLESS OTHERWISE STATED

PIPE SIZE		SLING ROD DIA.	PIPE CLIP					BOLT HOLE DIA.	BOLTS DIA. X L	DISTANCE PIECE NOM SIZE X J
NOM SIZE INS	O.D.		D DIA	CLIP B X T	P	Q	G			
1/2	21.3	12	23	40 x 5	65	70	15	12	M10 x 45	3/8 x 15
3/4	26.7	12	28	40 x 5	70	70	15	12	M10 x 45	3/8 x 15
1	33.4	12	36	40 x 5	75	70	15	12	M10 x 45	3/8 x 15
1 1/2	48.3	12	50	40 x 5	90	70	18	15	M12 x 50	1/2 x 15
2	60.3	12	62	40 x 5	105	80	18	15	M12 x 50	1/2 x 15
3	88.9	16	92	40 x 8	165	95	24	19	M16 x 65	3/4 x 19
4	114.3	16	118	40 x 8	190	95	24	19	M16 x 65	3/4 x 19
6	168.3	16	172	40 x 8	245	95	24	19	M16 x 65	3/4 x 19
8	219.1	20	224	45 x 10	315	95	30	24	M20 x 80	3/4 x 23
10	273	20	278	55 x 15	390	90	30	24	M20 x 90	3/4 x 23
12	323.9	24	330	65 x 20	475	115	36	28	M24 x 110	1 x 27
14	355.6	30	362	65 x 20	525	115	45	35	M30 x 130	1 1/4 x 33
16	406.4	30	412	90 x 25	600	115	45	35	M30 x 140	1 1/4 x 33
18	457.2	30	464	65 x 20	625	115	45	35	M30 x 130	1 1/4 x 33
20	508	30	516	90 x 25	700	115	45	35	M30 x 140	1 1/4 x 33
22	558.8	30	566	90 x 25	750	115	45	35	M30 x 140	1 1/4 x 33
24	609.6	30	618	90 x 25	805	115	45	35	M30 x 140	1 1/4 x 33

PIPE SUPPORTS

PIPE CLIPS FOR LAGGED STEEL PIPES.

1/2 in TO 24 in nom size

PIPE FLUID TEMPERATURE\* minus 20°C TO 400°C

BS 3974 Part 1 RANGE 'B'