

PIPE SUPPORT

SK05

WELD-ON SKID WITH ANTI-FRICTION BAR
LAGGED OR UNLAGGED CARBON STEEL PIPE;
NPS 1/2 TO NPS 6

Specifications

Skid and guides; carbon steel to BS 4360 Grade 43 A

Sole plate; austenitic steel to BS1449: Part 2 Grade 304515 or 304531

Carbon steel surfaces to be protected after fabrication by a paint finish to be agreed.

ISO metric bolts to BS 4190 Gr 4.6; ISO metric nuts to BS 4190 Gr 4

Nuts and bolts to be zinc electro plated to BS 3382: Part 2

All dimensions in millimetres unless otherwise stated

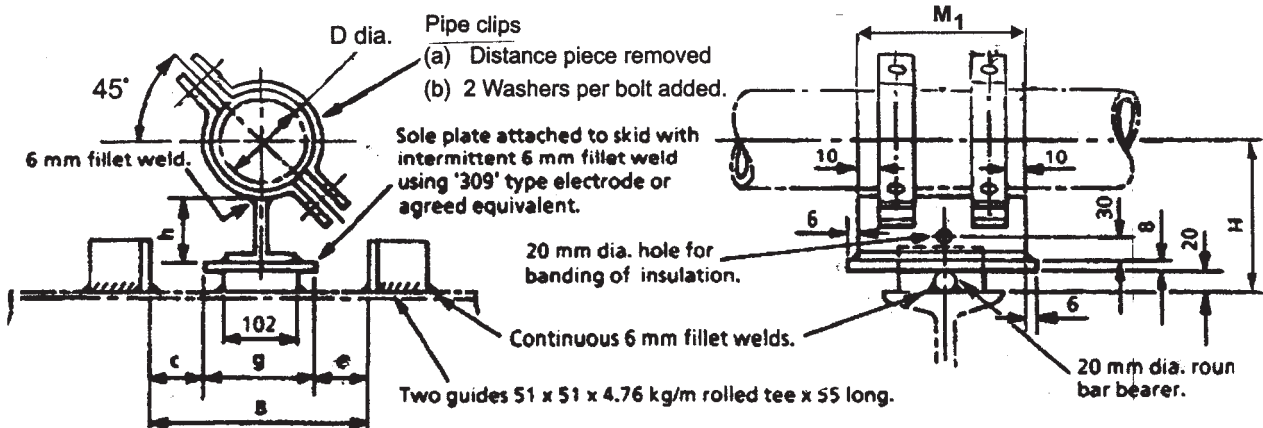


TABLE 1

Pipe			Size of Tee	H	h	Austenitic Step Sole Plate
D Nom Size	Outside Diameter					
NPS	DN					
1/2	15	21.3	102 x 97 CUT FROM 203 x 102 x 23 kg/m UNIVERSAL BEAM	141	97	$M_1 + 12$ mm x g mm x 8mm THICK
3/4	20	26.7		144	97	
1	25	33.4		147	97	
1 1/2	40	48.3		155	97	
2	50	60.3		161	97	
3	80	88.9	102 x 94 CUT FROM UB 203 x 102 x 23 kg/m	175	94	
4	100	114.3		188	94	
6	150	168.3	102x144 CUT FROM 305 x 102 x 33kg/m UNIVERSAL BEAM	265	144	

TABLE 2

c	g	B
5	132	142
10	142	162
15	152	182
20	162	202
25	172	222
30	182	242
35	192	262
40	202	282
45	212	302
50	222	322

To order this standard, Quote SK05 / D / B / M1.