

PIPE SUPPORT

SK03

WELD-ON SKID.

LAGGED OR UNLAGGED CARBON STEEL PIPE;
NPS 1/2 TO NPS 6

Specifications

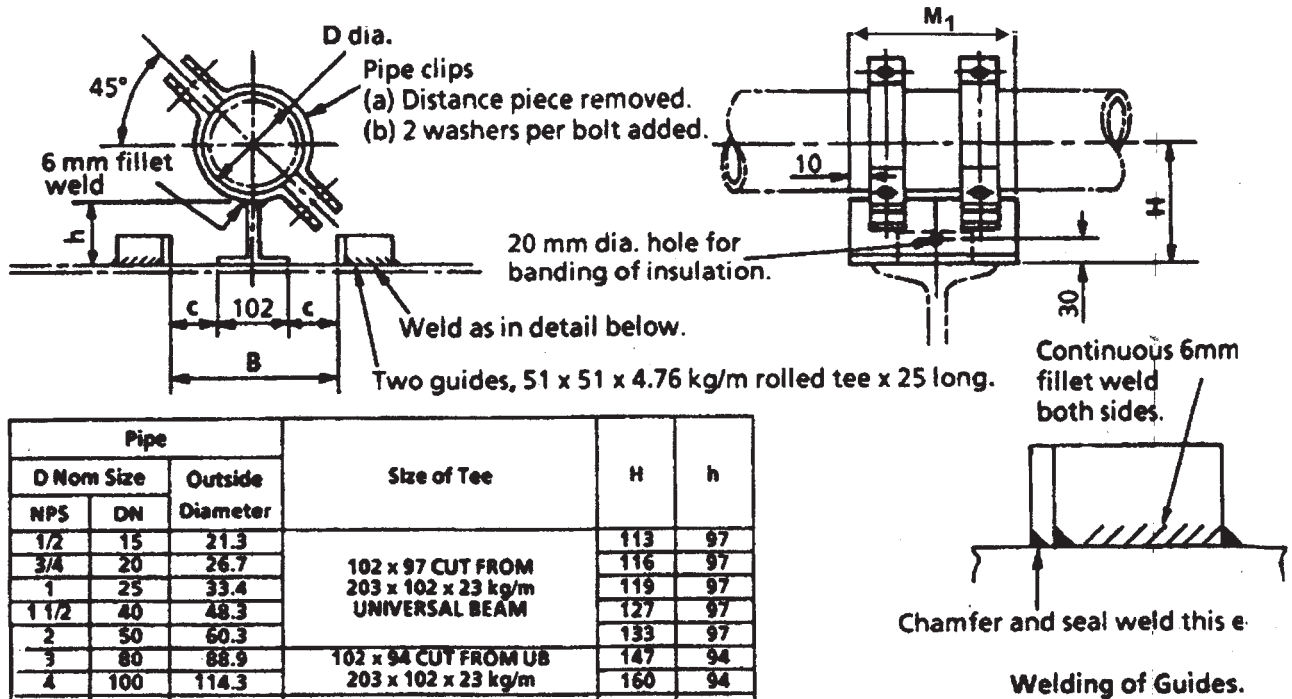
Skid and guides; carbon steel to BS 4360 Grade 43 A

Skid to be hot dipped galvanised to BS 729 unless used with stainless steel pipe.

ISO metric bolts to BS4190 Gr 4.6; metric nuts to BS 4190 Gr 4.

Nuts and bolts to be zinc electro plated to BS 3382: Part 2

All dimensions in millimetres unless otherwise stated



Pipe			Size of Tee	H	h
D Nom Size	Outside	Diameter			
NPS	DN				
1/2	15	21.3	102 x 97 CUT FROM 203 x 102 x 23 kg/m UNIVERSAL BEAM	113	97
3/4	20	26.7		116	97
1	25	33.4		119	97
1 1/2	40	48.3		127	97
2	50	60.3		133	97
3	80	88.9	102 x 94 CUT FROM UB 203 x 102 x 23 kg/m	147	94
4	100	114.3		160	94
6	150	168.3	102x144 CUT FROM 305 x 102 x 33kg/m UNIVERSAL BEAM	237	144

To order this standard, Quote SK03 / D / B / M1.