

PIPE SUPPORT

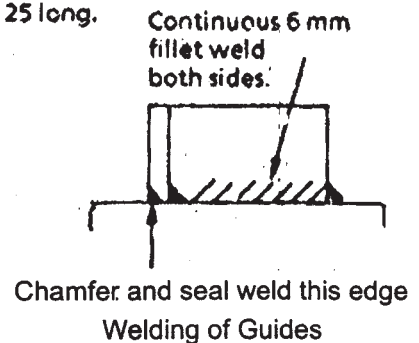
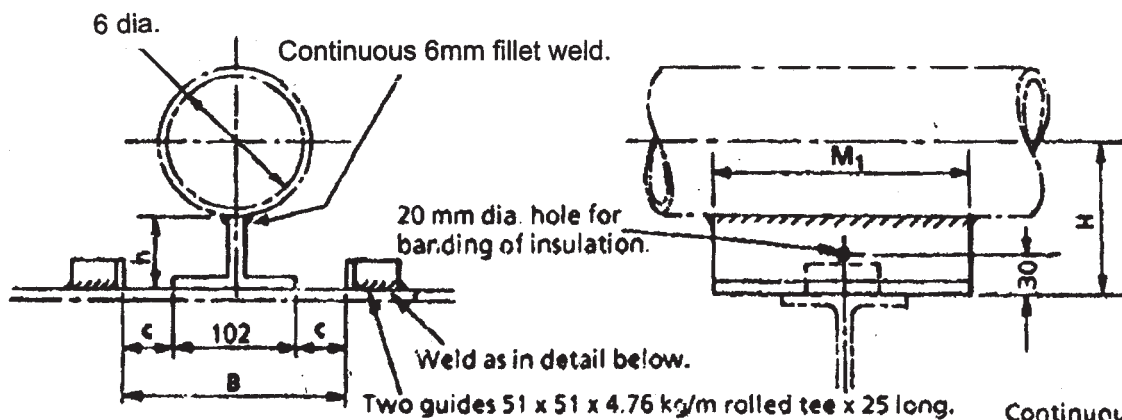
SK01

WELD-ON SKID WITH OR WITHOUT GUIDES
LAGGED OR UNLAGGED CARBON STEEL PIPE;
NPS 1/2 TO NPS 6

Specifications

Skid and guides; carbon steel to BS 4360 Grade 43 A

All dimensions in millimetres unless otherwise stated



Pipe			Size of Tee	H	h
DNom Size	Outside	Diameter			
NPS	DN				
1/2	15	21.3	102 x 102 CUT FROM 203 x 102 x 23 kg/m UNIVERSAL BEAM	113	102
3/4	20	26.7		116	102
1	25	33.4		119	102
1 1/2	40	48.3		127	102
2	50	60.3		133	102
3	80	88.9		147	102
4	100	114.3		160	102
6	150	168.3	102x152 CUT FROM 305 x 102 x 33kg/m UNIVERSAL BEAM	237	152

To order this standard, Quote SK01 / D / B / M1.